



1 9 9 5

LINCOLN

CONTINENTAL



The result of this perfect balance is, quite simply, a remarkable new kind of luxury car. The all-new
INTRODUCING
Lincoln Continental. Its silken power is governed by the InTech System which combines an advanced
THE PERFECT
DOHC, 32-valve, aluminum V-8 engine, an electronic, four-speed automatic transmission and a
BALANCE OF
computer-controlled air suspension system. And equally impressive is its intelligence. This car
LUXURY AND
actually learns a whole range of your personal driving preferences and remembers them for you.
TECHNOLOGY.

Proving that beauty can also have a high IQ.



The all-new Continental takes the definition of choice far
A CAR THAT
beyond anything you've ever experienced in a luxury car.
BRINGS YOU

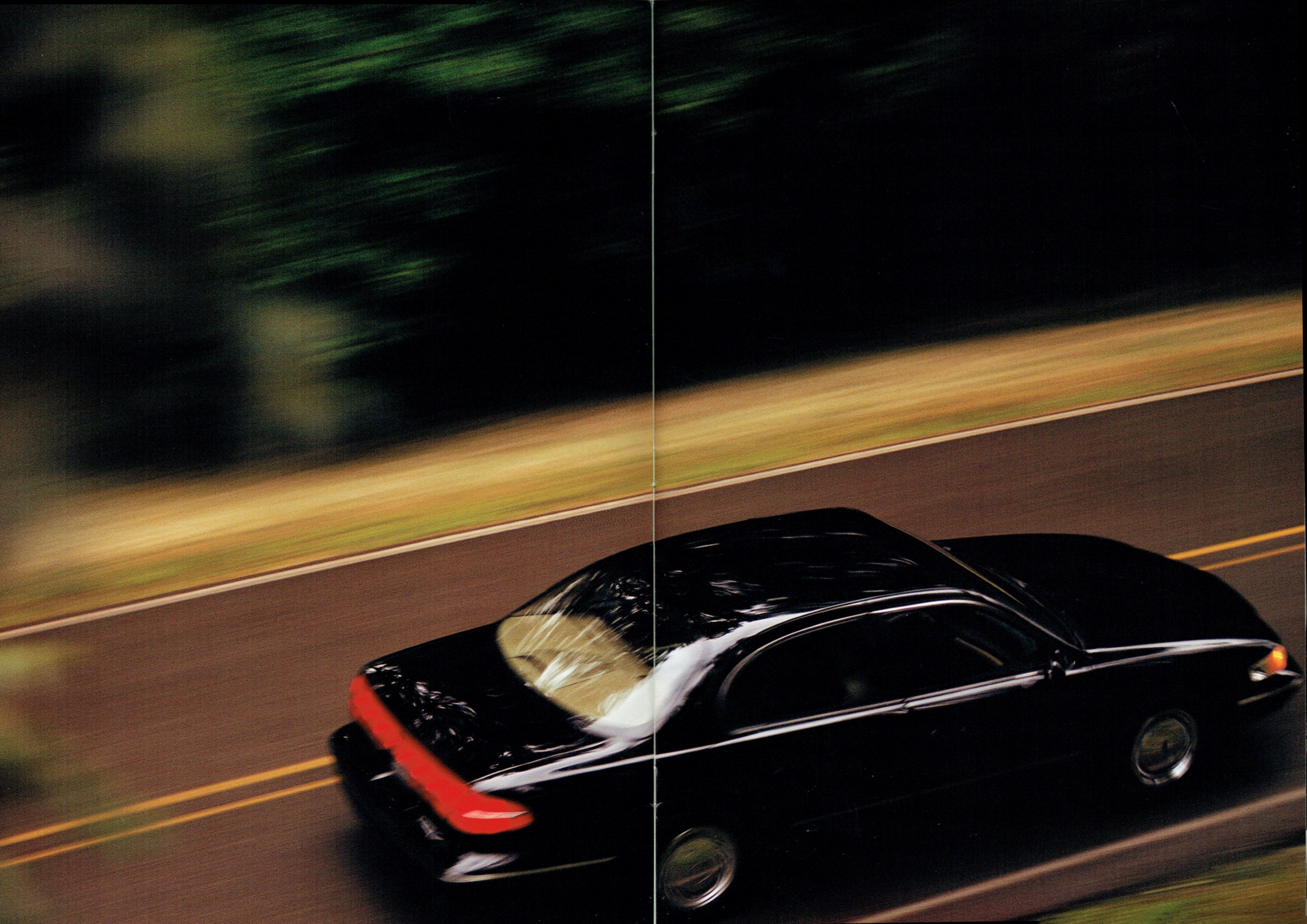
In Continental it means you can select your desired level
THE ULTIMATE
of steering effort and suspension stiffness. And you can
LUXURY:
do it almost instantly, as you're driving, changing the
CHOICE.

ride and handling characteristics of the car to your liking.

Among the world's luxury cars, only Continental brings

you this ultimate luxury of choice which you'll learn

about in detail in another section of this brochure.







WELCOME, DRIVERS.
Instruments and controls are ergonomically sized and shaped for exceptional driver ease. An advanced 3-D virtual image illumination system projects gauges, including tachometer and warning indicators, onto a specially designed screen.

interior

Our interior designers are dedicated to the idea that

LAVISH

luxury lies in the details. For example, they insisted

ATTENTION

that all window and door lock controls be illuminated.

TO DETAIL

That all seating surfaces be crafted of supple leather.

IS A VERY

That intrusive sounds be bunted down and quieted.

COMFORTING

And on and on. When they were finally comfortable

IDEA.

with the interior, we knew you would be too.



A seat that suits the way you sit with a new four-way power lumbar that moves vertically, as well as in and out, to shape itself to your back. Both front seats are also six-way power-adjustable.

An available cellular telephone tucks neatly into the top of the console (or the armrest on six-passenger models). Phone number dialed, length of call and signal strength are shown on the message center. Also, it's voice-activated for hands-free calling.

Dual front seat cup holders pop out at a touch to hold your beverage. When you're through, they disappear just as effortlessly.

Walnut Burlwood console complements Continental's handsome interior decor.



The CDs ride up front for the first time with an available six-disc CD changer that's conveniently located in the passenger compartment on all Continentals.



personally yours

The new Continental learns a lot about your

A CAR THAT

driving preferences, including the way you

LEARNS

like to sit, the kind of ride and steering you

WHAT YOU

want, the mirror positions that suit you —

LIKE AND

even your favored level of instrument panel

REMEMBERS

lighting. Twelve functions in all are retained

IT.

in its Memory Profile System which you

access remotely at the touch of a button on

your keyfob. And it does all this for two dif-

ferent drivers. Shown here are Memory

Profile features together with others

that make Continental so

personally satisfying.



Versatile keyfob not only activates Continental's Memory Profile features but also unlocks doors and trunk and turns on interior lights. The panic button flashes the headlamps and sounds the horn intermittently.

The message center personalizes its messages for you as part of the Memory Profile System. For example, it displays your chosen interval for time-delay headlamps and the ride/steer modes you've selected.

Radio control settings automatically become the stations you like to listen to, thanks to the Memory Profile System. As with all functions, the system remembers the preferences of two drivers.



Remote outside mirrors move to your favored position when you activate the Memory Profile System. They're also heated.

lighting. Twelve functions in all are retained in its Memory Profile System which you access remotely at the touch of a button on your keyfob. And it does all this for two different drivers. Shown here are Memory Profile features together with others that make Continental so personally satisfying.



Six-way power seats for both driver and front-seat passenger. The driver seat is remotely controlled by the Memory Profile System, so it's positioned to accommodate you before you even enter the car. Also, both seats feature Continental's new four-way lumbar control.

Easy entry/exit driver seat moves back two inches when the ignition key is removed. When the driver re-enters and re-inserts the ignition key, the seat returns to its previous position.

Outside mirrors automatically tilt downward when the transaxle is placed in reverse for a better view of rear clearance or curb when backing up.



Instrument panel lighting is automatically adjusted by the Memory Profile System to the precise degree of brightness you've chosen.



Autolamp delay is another driver preference remembered by the Memory Profile System. You select any interval from ten seconds to three minutes.



Express-down window moves fully down with a single tap of the driver-side window switch. As with all window switches, it's lighted.

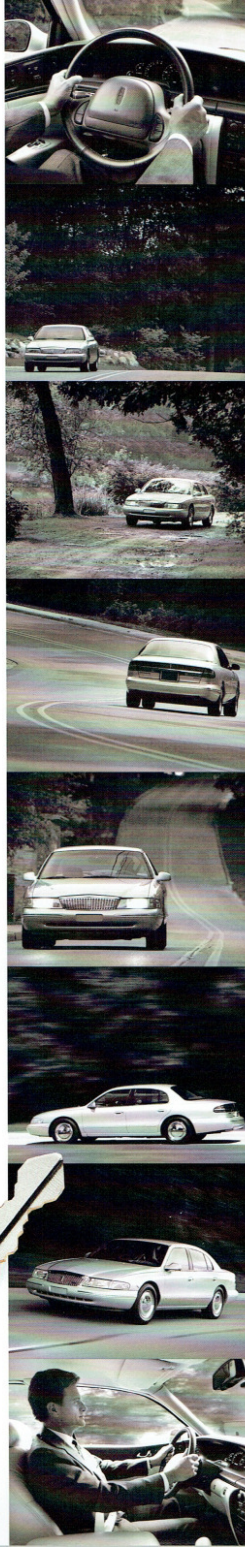


ride and handling

Designing a new speed-sensitive steering system

CHOOSE
and an advanced Four-Corner Semi-Active
THE PERFECT
Suspension System wasn't enough for Continental
SETTING FOR
designers. They wanted you to have choices. So
ANY OCCASION.

whether you prefer the quick, surefooted handling
of a contemporary sedan; the soft, luxurious ride
of a traditional limousine or something in
between, you can have it. And if a particularly
interesting road brings out the driver in you,
Continental can change to suit your mood. You
can choose from three levels of steering effort and
three degrees of suspension firmness as shown on
the right. Among the world's luxury cars, only the
new Continental makes these choices possible.



Low steering effort/plush suspension:
Traditional Lincoln-driver luxury.

Low steering effort/normal suspension:
Traditional luxury steering ease with contemporary ride.

Normal steering effort/plush suspension:
Ideal steering with a ride that smooths out rough pavement.

Normal steering effort/normal suspension:
The optimum combination. Best balance of chassis systems.

Normal steering effort/firm suspension:
Contemporary ride with responsive steering feel.

High steering effort/firm suspension:
Responsive handling on winding roads.

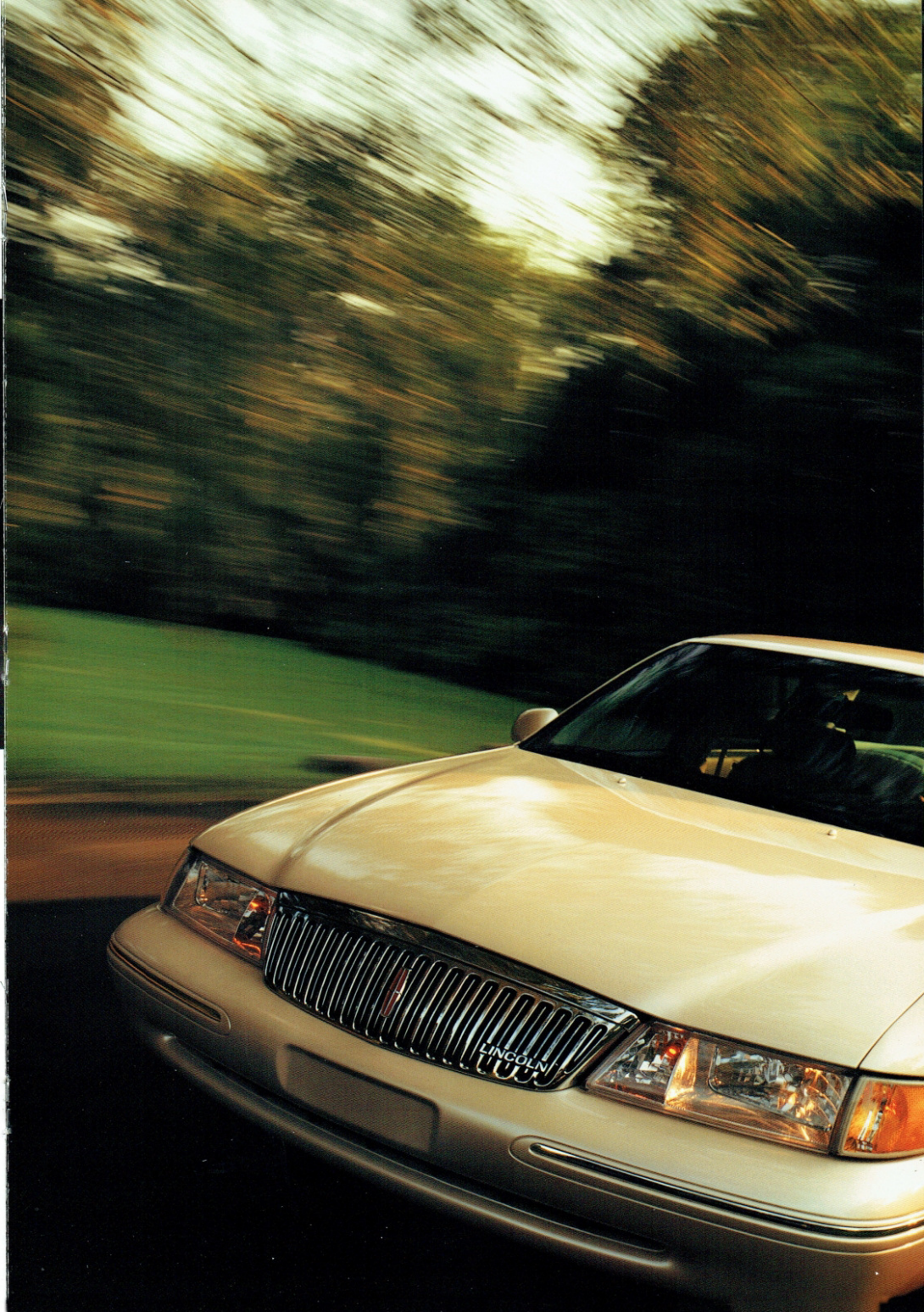
High steering effort/normal suspension:
Contemporary ride with precise steering.

High steering effort/plush suspension:
Soft, luxury ride with responsive steering.

The message center display features a dot matrix display screen capable of delivering 25 different messages. In addition to reporting on major automotive systems and delivering trip data, it helps the driver make ride/steering choices.




Suspension and steering settings are achieved by pressing the ride/steer button on the instrument panel. Steering and suspension choices are displayed separately on the message center screen.





power

The new InTech System features precisely what its name
AN EMPHATIC
implies: intelligent technology. Its various components have
ANSWER TO THE
been engineered to deliver a responsive and confident driving
POWER QUESTION:
experience. Witness its 32-valve DOHC V-8 engine,
A 32-VALVE
producing 260 quietly obedient horsepower. An aluminum
DOHC V-8.
engine and roller-finger cam followers help create a light-
weight, powerful engine that's remarkably smooth and
surprisingly quiet. For peace of mind, this responsive V-8 has
been designed to run for 100,000 miles without a scheduled
tune-up. And it's teamed with a new computer-controlled,
4-speed transaxle and a computer-controlled suspension
system. The InTech system is governed by intelligent monitors
that constantly check engine, transaxle and suspension func-
tions. In the event of a malfunction, processors can actually
make split-second decisions to help keep your Continental
both operable and drivable.



active safety

Or snow. Or the unforeseen patch of glare ice. Its four-wheel disc Anti-lock Braking System helps the driver

CONTINENTAL

maintain steering control during hard braking, even on slick road surfaces. And Continental's available

RUNS ON

All-Speed Traction Control system helps the car to obtain maximum wheel grip for sure, smooth standing

WATER.

starts in slippery conditions. This totally new and sophisticated system also functions at highway speeds for

increased control and stability, especially when the weather is less than ideal.

personal security



Four-wheel disc Anti-lock Brake System. Ample stopping power is augmented by ABS to give the driver greater steering control while braking, particularly on slippery road surfaces.



Electrochromic rearview mirrors. Available rearview and driver-side exterior mirrors automatically alter their reflectivity to shield your eyes from the glare of other cars' headlamps.



Cornering lamps. Activate with turn signals to increase visibility when completing a turn at night.



Dual air bags. Expect nothing less from the first luxury car manufacturer to offer dual air bags as standard equipment on all models. (Always wear your safety belt.)



Interior padding. Key interior areas are padded and virtually every surface is rounded to help avoid injury in the event of a collision.



Reinforced roof pillars. The roof and front pillars are engineered to meet a static force test equal to 5,000 pounds.



Side door beams. They're part of a system which meets Federal Dynamic Side Impact Standards targeted for 1997.



High-strength door latches. Doors are designed to remain closed in the event of a front or rear collision.



Safety belts. A new three-point safety belt for center rear-seat passengers provides the added protection of a shoulder belt — a feature found on few other cars. Outboard-seated passengers also have lap/shoulder belt protection.



Child-proof rear door locks. A standard Continental feature, they guard against accidental opening of the rear doors from the inside.



A child seat restraint tether anchor. In the rear seat area it adds increased safety and peace of mind when transporting small infants in child seats.



Crumple zones. They're engineered into the front and rear of the car to help absorb some of the energy of a collision before it reaches the passenger compartment.

CONTINENTAL'S

comprehensive safety design. For while the air bag Supplemental

FULL-COVERAGE

Restraint System, in combination with properly worn safety belts, is

PROTECTION

a vital source of protection in certain moderate to severe frontal

PLAN

impacts, Continental's protection includes every aspect of the car

Extensive measures have been taken to help protect occupants in a

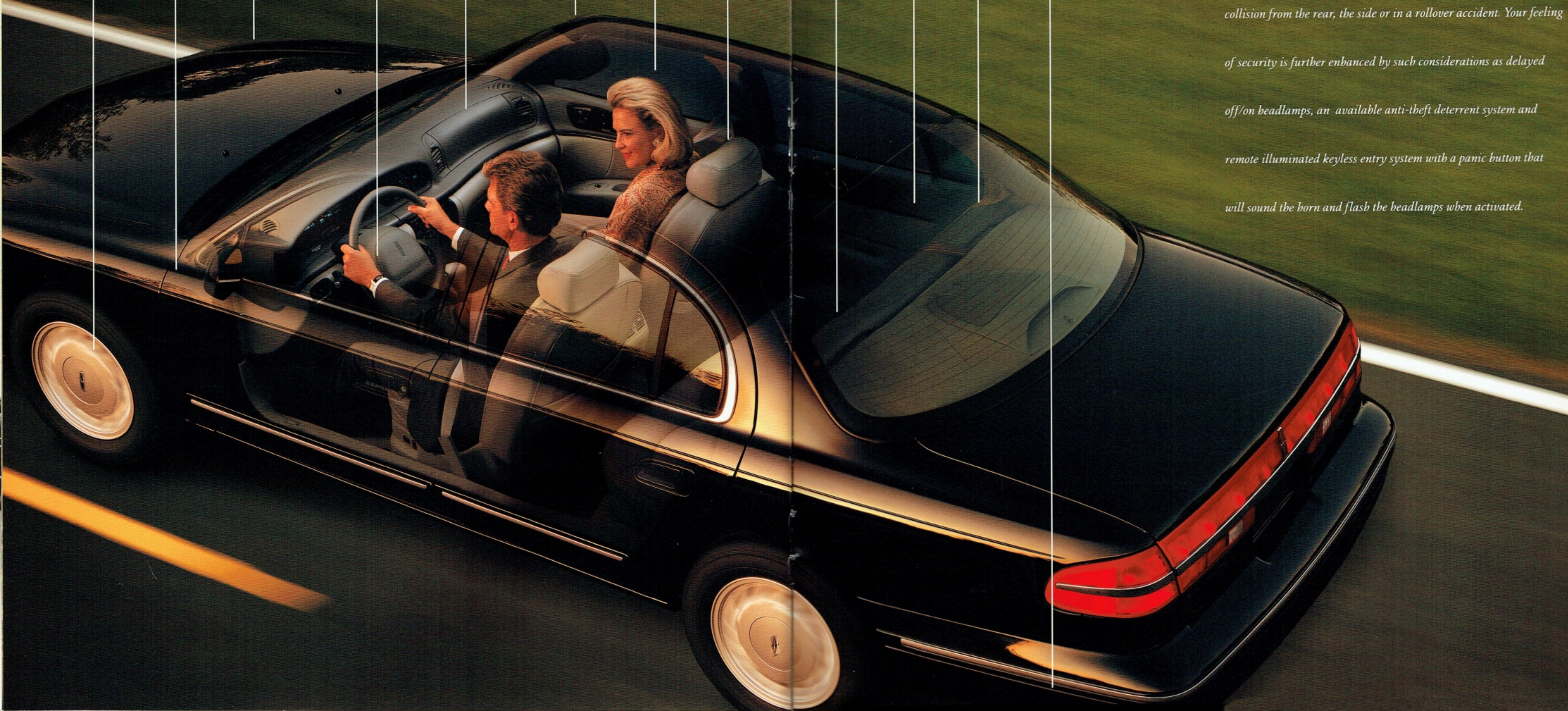
collision from the rear, the side or in a rollover accident. Your feeling

of security is further enhanced by such considerations as delayed

off/on headlamps, an available anti-theft deterrent system and

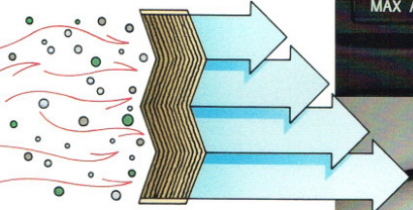
remote illuminated keyless entry system with a panic button that

will sound the horn and flash the headlamps when activated.

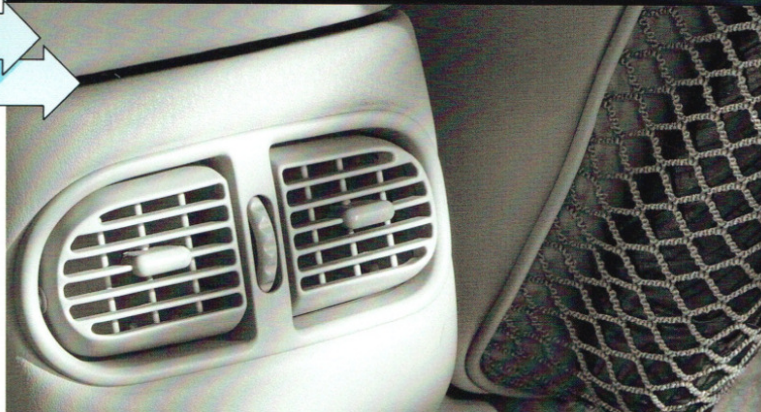


A High-Level Audio System featuring the latest "distributed audio" technology delivers sound of exceptional clarity and realism. Larger, ergonomically designed controls and electro-luminescent dial lighting simplify usage.

Electronic Automatic Temperature Control System with solar load sensor. You simply set the system at the temperature you prefer and forget it. No matter what the outside weather is like, it's ideal inside your Continental. Also, Continental's new, larger air-conditioning/heating/ventilation system employs a non-oxone-depleting, CFC-free refrigerant.

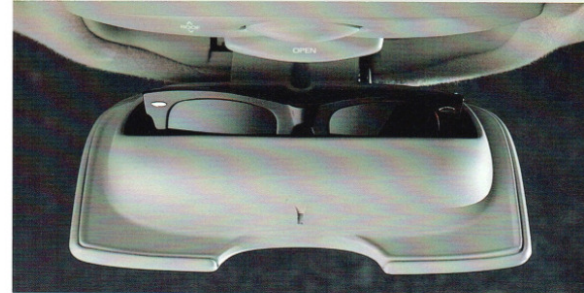


New MicronAir® Filtration System, a product of technology found in no other American luxury car, helps improve the air you breathe in the new Continental. By utilizing layers of electrostatically charged micro-fibers, it filters out air pollutant particles as small as three microns in diameter before they can reach the interior through Continental's Automatic Temperature Control System. It's one more reason why Continental passengers can breathe easier.



Rear seat air-conditioning ducts on five-passenger models now channel Automatic Temperature Control System air directly into the rear compartment for rear-passenger comfort. Now, everyone has the "best seat."

MicronAir® is a registered U.S. trademark of Freudenberg Nonwovens.



Sunglasses and garage door opener storage. Allows you to access your opener and keep it secured and out of the way. Also provides a convenient space for your sunglasses.

surprises and delights

One of the delights of the new Continental is the way you'll **THE PLEASURE**

continually discover its hidden treasures of luxury. For this is a **OF UNEXPECTED**

car in which technology has been harnessed to serve you in count- **LUXURIES.**

less ways. A car that constantly reminds you that it is, indeed, a

luxury automobile of exceptional comfort and convenience. Shown

here are but a few of the surprises and delights you'll discover as

you get to know your new Lincoln Continental.



Safety belt height adjuster consists of a new D-ring for the driver and front-seat passenger. Since people vary in size, Continental designers believe drivers should be able to adjust the height to accommodate them. This feature permits adjustment to five different positions for greater safety belt comfort.



An umbrella holder with umbrella is a uniquely personal Continental touch. With a handle of Walnut Burlwood to match Continental's interior decor, the umbrella nests neatly in a mesh pocket designed especially for quick drying, located on back of the passenger seat.



Backlit switches for all windows, door locks and speed controls are another example of Continental's emphasis on personal luxury. No one is ever in the dark about the location of these important switches.



Continental's dynamic door sealing system is one of the industry's most advanced. It provides triple seals around all door openings to help exclude outside sound and diminish wind noise. It also channels water away from passengers when doors are opened.

*more
surprises
and
delights*

*When you first drive your new Lincoln Continental,
THE
prepare to embark on a journey of discovery. Rarely,
SURPRISES
if ever, has a car been so richly endowed with so
GO ON
many technological amenities that serve you so well.
AND ON.
And being at your service is the very essence of this*

*contemporary luxury car. Continental designers
believe that you should not just be satisfied with
your car, you should be delighted with it. The new
Continental is the result of a steadfast dedication
to that belief.*

*Theatre lighting dims
interior courtesy
lamps over a five-
second period before
turning off, giving a
dramatic effect.*



*Continental's battery
saver automatically
shuts off interior lamps
and headlamps if they
are inadvertently
left on. (Most similar
systems turn off only
interior lamps.)*



*Smart lock is a
thoughtful new
system that pre-
vents doors from
locking when the
car is turned off,
and the key is still
in the ignition.*



*Six-passenger seat-
ing, available as
an option, features
50/50 split bench
seating with leather
seating surfaces.
A mini-console and
storage armrests
are also included.*



*An available advanced
anti-theft system
protects your Continental
by sounding the horn and
flashing headlamps and tail-
lamps when an intrusion is
detected.*



*Solar tint glass.
Filters out a higher
percentage of the sun's
rays than standard tint
or clear glass to reduce
air-conditioning cool-
down times. Also helps
to protect fabric surfaces
from sun fading.*

*Continental's complex
reflector headlamps
stand at the forefront
of technology in terms
of advanced materials
and design. These new
units provide consistent
high-performance light
output with a faceted
jewel appearance.*

*Cornering and side
marker lamps are com-
bined in one gem-like
unit. Like the head-
lamps, they flow
flawlessly into the
Continental's smoothly
sculpted front end for
enhanced appearance
and aerodynamics.*



It is more than the prestige of owning a superior luxury
THE
automobile. The Lincoln Commitment is a comprehensive
LINCOLN
owner benefits package designed to provide you with services to
COMMITMENT.SM
support your every driving need. It includes 24-hour Roadside
Service Assistance, a Service Loaner, Destination Assistance,
Emergency Travel Expenses, Travel Planning and one of the
best warranties in the industry. Plus much more. Ask your
dealer for a complete description of the Lincoln Commitment
benefits and a copy of the limited warranty.

options

Cargo storage system. This trunk-mounted system gives you a helping hand with luggage when you travel in the new Continental.

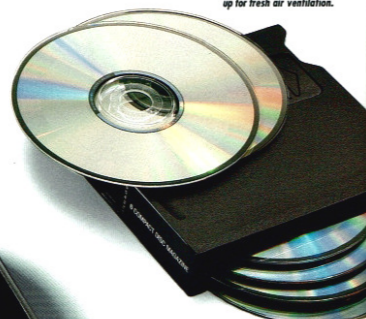
JBL Audio System with Digital Signal Processing (DSP). A state-of-the-art, 145-watt, bi-amplified system that includes a powerful 85-watt subwoofer amp and eight speakers. With DSP you may choose spatial effects that surround you with stadium sound, concert hall ambience or more intimate listening environments.



Heated front seats include controls for the seat cushion and seatback with five settings. Driver seat and passenger seat are, of course, individually controlled.

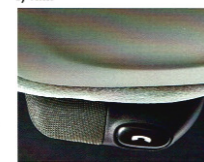
Electrochromic mirror with compass. This highly useful automatically dimming inside mirror is available in combination with the electrochromic driver-side rearview mirror.

Power moonroof opens at the touch of a switch to provide a skylight view or it tilts up for fresh air ventilation.



Six-disc CD changer lets you enjoy hours of musical pleasure with the clarity of CD sound (available with the new JBL Audio System). It holds six discs—and it's located in the passenger compartment.

Voice-activated cellular telephone lets you dial a number simply by saying aloud the previously stored name of the person or firm. It also includes a handset which lifts out of the center console (or the armrest on six-passenger models). Its memory holds 30 phone numbers and 20 accessed by voice.



SPECIFICATIONS

DIMENSIONS

| | |
|---|-------------------------|
| VEHICLE TYPE: FIVE-PASSENGER, FOUR-DOOR SEDAN | |
| WHEELBASE (IN.): | 109.0 |
| TRACK (IN.): | FRONT 63.0 REAR 61.5 |
| LENGTH (IN.): | 206.3 |
| WIDTH (IN.): | 73.6 |
| HEIGHT (IN.): | 56.0 |
| CURB WEIGHT (LBS.): | 3,971 |
| FUEL CAPACITY (GAL.): | 17.8 |
| LUGGAGE SPACE (CU. FT.): | 18.1 |

ACCOMMODATIONS

| | |
|----------------------|-------------------------|
| HEADROOM (IN.): | FRONT 39.0 REAR 38.0 |
| LEGGROOM (IN.): | FRONT 41.9 REAR 38.9 |
| HIPROOM (IN.): | FRONT 55.7 REAR 56.5 |
| SHOULDER ROOM (IN.): | FRONT 57.1 REAR 56.6 |

ENGINE

| | |
|----------------------------------|---|
| LAYOUT: | FRONT ENGINE, FRONT-WHEEL DRIVE |
| TYPE: | DOHC 32-VALVE MODULAR V-8 |
| DISPLACEMENT (LITERS/CU. IN.): | 4.6/281 |
| BORE & STROKE (MM/IN.): | 90.2X90.0/3.6X3.6 |
| COMPRESSION RATIO: | 9.85:1 |
| HORSEPOWER @ RPM (SAE NET): | 260 @ 5750 |
| TORQUE @ RPM (LBS.-FT. SAE NET): | 265 @ 4750 |
| FUEL DELIVERY: | SEQUENTIAL MULTI-PORT ELECTRONIC FUEL INJECTION |
| FUEL REQUIREMENT: | 91 OCTANE PREMIUM RECOMMENDED |

DRIVETRAIN

| | |
|--------------------|--|
| TRANSMISSION TYPE: | ELECTRONICALLY CONTROLLED FOUR-SPEED AUTOMATIC OVERDRIVE |
| GEAR RATIOS: | I-2.77:1 II-1.54:1 III-1.00:1 IV-0.69:1 |
| AXLE RATIO: | 3.56:1 |

CHASSIS

| | |
|-------------------------------------|--|
| BODY: | UNITIZED CONSTRUCTION WITH SEPARATE FRONT SUBFRAME |
| SUSPENSION: | |
| FRONT: | INDEPENDENT MACPHERSON STRUTS WITH STRUT-MOUNTED AIR SPRINGS, 19.0MM STABILIZER BAR, TENSION STRUTS AND LOWER CONTROL ARMS |
| REAR: | SLA INDEPENDENT WITH AIR SPRINGS, 19.5MM STABILIZER BAR, TENSION STRUTS, UPPER CONTROL ARMS, LOWER CONTROL ARMS, CAST SPINDLE WITH FORGED AND INTEGRATED BALL JOINTS |
| SHOCK ABSORBERS: | GAS-PRESSURIZED HYDRAULIC WITH INTERNAL REBOUND SPRING, AUTOMATIC FAST-ACTING DUAL DAMPING WITH THREE DRIVER SELECTIONS: PLUSH, NORMAL, FIRM |
| LEVELING SYSTEM: | MICROCOMPUTER-CONTROLLED FOUR WHEEL AIR SPRINGS WITH AUTOMATIC FRONT-TO-REAR AND SIDE-TO-SIDE LEVELING |
| STEERING TYPE: | SPEED-SENSITIVE, VARIABLE-ASSIST POWER RACK-AND-PINION WITH THREE DRIVER SELECTIONS FOR STEERING EFFORT: LOW, NORMAL, HIGH |
| OVERALL RATIO (ON CENTER): | 16.0:1 |
| TURNS, LOCK TO LOCK: | 2.84 |
| TURNING CIRCLE, CURB TO CURB (FT.): | 41.1 |
| BRAKES: | |
| FRONT: | 11.57-INCH POWER-ASSISTED DISC, ANTI-LOCK |
| REAR: | 10.2-INCH POWER-ASSISTED DISC, ANTI-LOCK |
| WHEELS: | 16 X 7-INCH ALUMINUM |
| TIRES: | P225/60R16 97H STEEL-BELTED BLACK SIDEWALL RADIALS |

STANDARD FEATURES FUNCTIONAL

4.6-LITER 32-VALVE V-8 ENGINE
SEQUENTIAL MULTI-PORT ELECTRONIC FUEL INJECTION
ELECTRONIC ENGINE CONTROL (EEC-V)
ELECTRONICALLY CONTROLLED NON-SYNCHRONOUS SHIFT WIDE-RATIO FOUR-SPEED AUTOMATIC TRANSAXLE
FOUR-CORNER SEMI-ACTIVE AIR SUSPENSION
INDEPENDENT REAR SHORT- AND LONG-ARM SUSPENSION
DRIVER ADJUSTABLE SUSPENSION SELECTIONS (PLUSH, NORMAL, FIRM) AND STEERING SELECTIONS (LOW, NORMAL, HIGH)

SAFETY

DRIVER AND RIGHT FRONT PASSENGER AIR BAG SUPPLEMENTAL RESTRAINT SYSTEM (SRS)
THREE-POINT SAFETY BELTS FOR FRONT OUTBOARD AND REAR PASSENGERS INCLUDING REAR CENTER SEAT OCCUPANT
FRONT CENTER LAP BELT (6-PASSENGER ONLY)
FRONT AND REAR CRUMPLE ZONES
HEAVY-GAUGE STEEL SIDE DOOR INTRUSION BEAMS
FOUR-WHEEL POWER DISC ANTI-LOCK BRAKES (ABS)
HOME SAFE TRANSAXLE
BRAKE/SHIFT INTERLOCK
FOUR-WAY ADJUSTABLE FRONT SEAT HEAD RESTRAINTS
POWER REMOTE HEATED MIRRORS WITH REVERSE TILT DOWN FEATURE
UNIQUE COMPLEX REFLECTOR HEADLAMPS
REAR SEAT CHILD-PROOF DOOR LOCKS
CHILD SEAT SAFETY TETHER

INTERIOR/CONVENIENCE FEATURES

FIVE-PASSENGER SEATING WITH CENTER CONSOLE
LEATHER SEATING SURFACES/LEATHER-WRAPPED STEERING WHEEL
SIX-WAY POWER DRIVER AND FRONT PASSENGER RECLINERS WITH MEMORY DRIVER SEAT AND FOUR-WAY POWER LUMBAR
EASY ENTRY/EXIT DRIVER'S SEAT
CFC-FREE ELECTRONIC AUTOMATIC TEMPERATURE CONTROL SYSTEM WITH SUNLOAD SENSOR
MEMORY PROFILE SYSTEM: STEERING EFFORT, RIDE CONTROL, RADIO STATIONS, DRIVER'S SEAT POSITION, MIRROR POSITION, AUTOLAMP DELAY SETTING, PANEL LIGHTING SETTING, EASY ENTRY/EXIT DRIVER'S SEAT, EXPRESS DOWN DRIVER'S WINDOW, AUTO DOOR LOCK, DOOR LOCK CHIRP, TILT-DOWN OUTSIDE MIRRORS
VIRTUAL IMAGE INSTRUMENT CLUSTER WITH MESSAGE CENTER
AUTOLAMP LIGHTING SYSTEM
INTERIOR THEATRE DIMMING LIGHTING
MICRONAIR® FILTRATION SYSTEM
SOLAR TINT GLASS
HIGH-LEVEL AUDIO SYSTEM WITH AM STEREO/FM STEREO RADIO AND CASSETTE REAR SEAT HEAT DUCTS
REAR SEAT AIR-CONDITIONING DUCTS (5-PASSENGER ONLY)
POWER WINDOWS WITH "EXPRESS DOWN" DRIVER WINDOW
POWER DOOR LOCKS WITH "SMART LOCK" FEATURE
KEYLESS ENTRY
FINGERTIP SPEED CONTROL (TAP-UP/TAP-DOWN FEATURE)
TILT STEERING WHEEL
FLOORMATS, FRONT AND REAR
REAR WINDOW DEFROSTER
UNIQUE LINCOLN UMBRELLA WITH WALNUT BURLWOOD HANDLE
UMBRELLA STORAGE BEHIND PASSENGER SEAT
WALNUT BURLWOOD CONSOLE APPLIQUE
CONCEALED ANTENNA
DELAYED ACCESSORY POWER
OVERHEAD CONSOLE WITH MAP LIGHTS, STORAGE FOR SUNGLASSES AND GARAGE DOOR OPENER
BATTERY SAVER FEATURE

EXTERIOR FEATURES

FLEXIBLE GRILLE/5-MPH BUMPERS
BODY-COLORED BOODSIDE PROTECTION MOLDING
EXTENSIVE CORROSION PROTECTION
SINGLE KEY ENTRY/IGNITION
CORNERING LAMPS
16" PAINTED ALUMINUM DIRECTIONAL WHEELS
DUAL EXHAUST WITH EXPOSED BRIGHT TIPS

AVAILABLE FEATURES

ANTI-THEFT ALARM SYSTEM
HEATED SEATING SURFACES WITH 5 TEMPERATURE SETTINGS
ELECTROCHROMIC MIRRORS WITH COMPASS
POWER MOONROOF
INTEGRATED VOICE-ACTIVATED CELLULAR PHONE
ALL-SPEED ELECTRONIC TRACTION CONTROL
SIX-PASSENGER SEATING WITH MINI-CONSOLE
JBL AUDIO SYSTEM WITH DIGITAL SIGNAL PROCESSING (DSP)
6-DISC CD CHANGER IN PASSENGER COMPARTMENT
16" CHROME ALUMINUM DIRECTIONAL WHEELS
CARGO STORAGE SYSTEM

PRODUCT CHANGES

FOLLOWING PUBLICATION OF THIS BROCHURE, CERTAIN CHANGES IN STANDARD EQUIPMENT, OPTIONS, PRICES AND THE LIKE, OR PRODUCT DELAYS MAY HAVE OCCURRED WHICH WOULD NOT BE INCLUDED IN THESE PAGES. YOUR LINCOLN DEALER IS YOUR BEST SOURCE FOR UP-TO-DATE INFORMATION.
LINCOLN-MERCURY DIVISION RESERVES THE RIGHT TO CHANGE PRODUCT SPECIFICATIONS AT ANY TIME WITHOUT INCURRING OBLIGATIONS.

EPA statement: 1995 EPA mileage estimates were unavailable when this publication was printed. The 1995 Lincoln Continental, however, should post good mileage figures. Ask your Lincoln dealer for the latest information. Options availability: Options shown or described in this brochure are available at extra cost and may be offered only in combination with other options or subject to additional ordering requirements or limitations.
INFORMATION BASED ON AAMA SPECIFICATIONS.

MICRONAIR® IS A REGISTERED U.S. TRADEMARK OF FRELDENBERG NONWOVENS

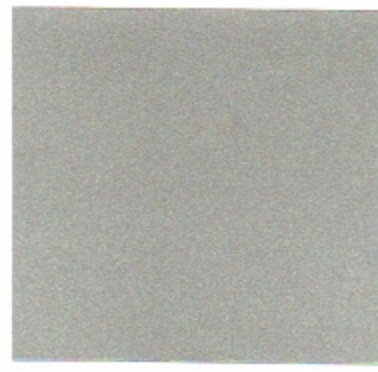


(510M) 8-94 P-368831

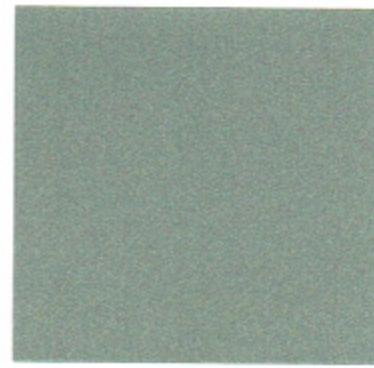
1 9 9 5

EXTERIOR

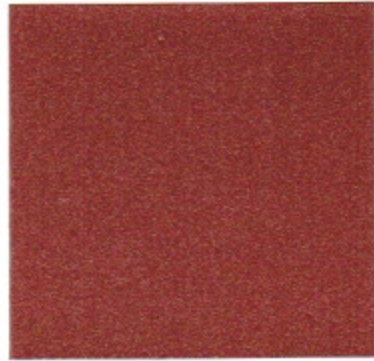
COLORS



CHAMPAGNE
CLEARCOAT METALLIC



EVERGREEN FROST
CLEARCOAT METALLIC



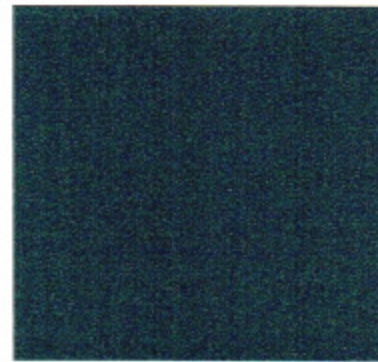
BERRY RED
CLEARCOAT METALLIC



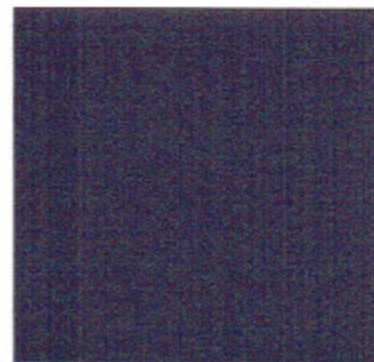
GARNET RED GLAZE
CLEARCOAT METALLIC



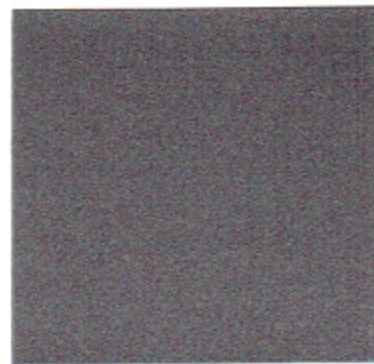
DEEP JEWEL GREEN
CLEARCOAT METALLIC



MEDIUM WILLOW GREEN
CLEARCOAT METALLIC



CHAMELEON BLUE
CLEARCOAT METALLIC



CHARCOAL GREY
CLEARCOAT METALLIC



SILVER FROST
CLEARCOAT METALLIC



MIDNIGHT BLACK
CLEARCOAT



DARK PORTOFINO BLUE
CLEARCOAT METALLIC



PERFORMANCE WHITE
CLEARCOAT

PORTOFINO BLUE
CLEARCOAT METALLIC



IVORY PEARLESCENT
CLEARCOAT
(EXTRA COST TRI-COAT)

INTERIOR

COLORS

LEATHER TRIM INTERIOR:

- CURRANT • EVERGREEN
- LIGHT GRAPHITE • IVORY
- PORTOFINO BLUE • SADDLE

 **LINCOLN**

What A Luxury Car Should Be